



The IPHAS nebulae database

L. Sabin, R. Corradi, K. Viironen, A. Mampaso and IPHAS

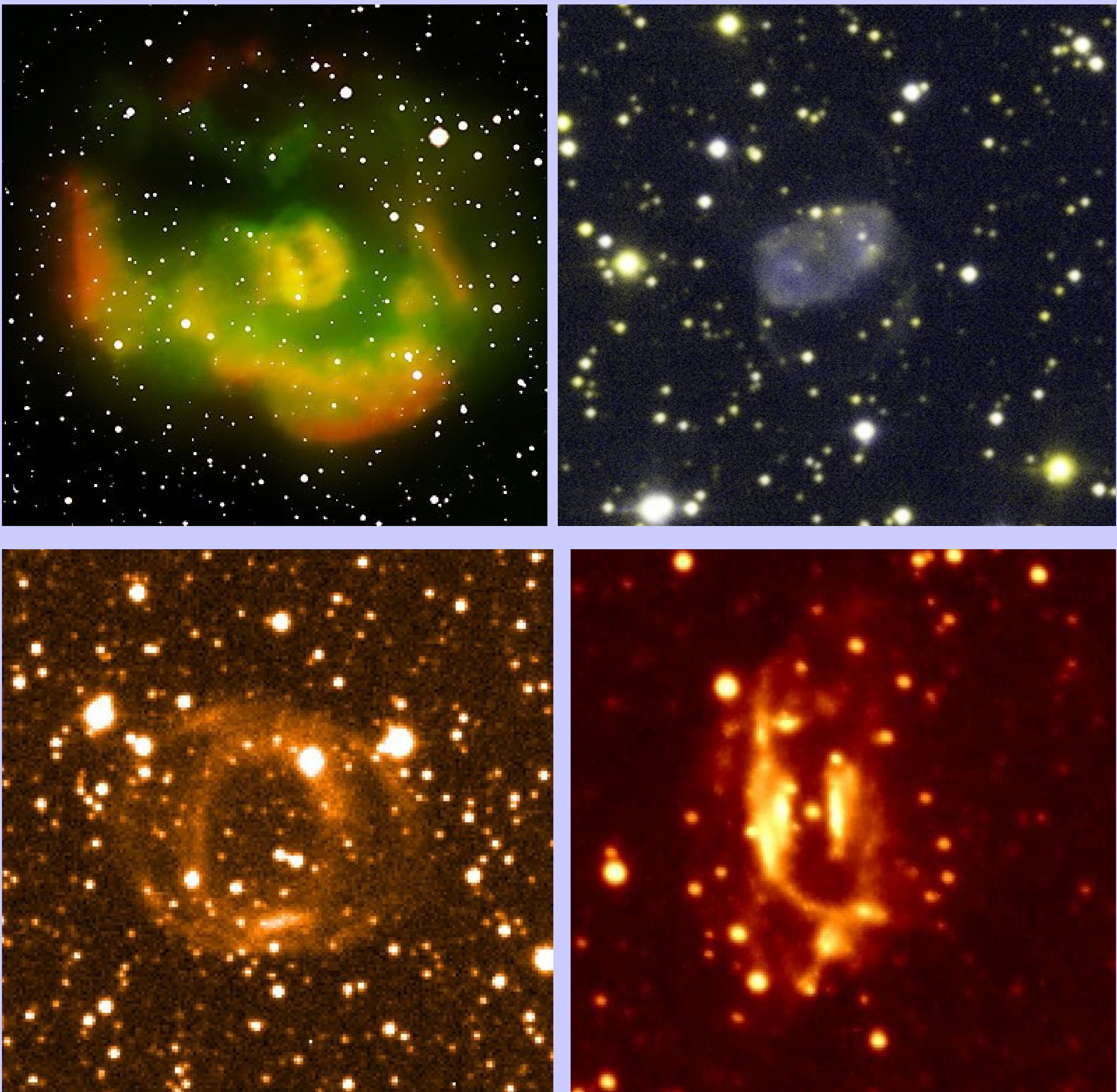
Started in 2003 at the 2.5m telescope INT with the Wide Field Camera, the **I**NT **P**hotometric **H** **A**lpha **S**urvey of the Galactic Plane (IPHAS) aims to have a census of the stellar population with H α emission located in the latitude range between -5 and 5 degrees. In this framework, our group is dedicated to the discovery of new nebular objects and more precisely of new Planetary Nebulae. We present here the first part of our new database containing the information on the extended nebulae (i.e. not point sources) located in the RA range 18h to 20h. The release of the catalogue is expected by the end of the year. (For more information on the survey: <http://www.iphas.org>.)

RA	Dec	Object name [Name/New]	Type	Morphology	Diameter [arcsec]	Comments	Links
18:35:22.390	-00:13:46.150	PN G030.8+03.4	PN	E r	49	-	FS
18:35:37.551	-00:34:47.410	HH 108E	HH	NA	101	HH108 (A & B & C & D & E)	FS
18:36:02.000	-00:02:26.160	PN PM 1-246	PN?	I	12	-	FS
18:36:52.778	-01:15:36.810	IPHASX J183652.8-011536	PN?	I	26	Possible very faint bipolar	FS
18:37:45.828	-01:46:05.390	IRAS 18345-0150	DNeb	I	900	Iras18345-0150 ref=0, iras 18352-0147 ref=2,5 below	FS
18:38:11.748	-01:05:12.370	IPHASX J183811.7-010512	PN?	I	22	possible very faint bipolar	FS
18:38:37.954	-02:07:19.380	IPHASX J183838.0-020719	DNeb	I	232	Iras 18357-0208 at 4' ref=0, faint nebulosity	FS
18:39:11.807	+01:06:24.630	IPHASX J183911.8+010624	PN?	R	6	IRAS 18366+0103 nearby	FS

Extract of the interactive database, the white rows refer to known objects and the green rows to new IPHAS objects. The links at the end of the table send the user to the IPHAS finder chart (F) and Simbad database (S). We also propose a search tool allowing to look for nebulae by RA, DEC, diameter, type and morphology.

•So far 789 H α emitters are listed in the catalogue and are distributed as follow :
(the “?” stand for candidates)

Type	Number
Planetary Nebula?	250
Planetary Nebula	102 (*)
Diffuse Nebula	311
HII region	58
HII region?	4
Emission line Star	9
Emission line Star?	10
Reflection Nebula	10
Galaxy	4
Herbig Haro	4
HI shell	1
Supernova Remnant	17
Young Stellar Object	3
Symbiotic Star	2



(*) Including 8 new confirmed IPHAS PNe

Gallery of confirmed planetary nebulae discovered with IPHAS